

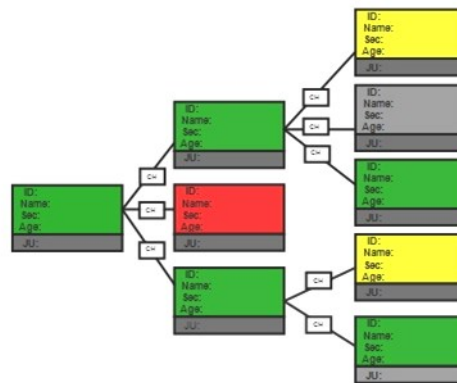


Multilink-Controller

Features

Establishing TDL-networks via packet based Wide Area connections:

- The software operates as a Multi-connection application router and interconnects multiple SIMPLE/JRE-nodes in a way that the nodes can exchange tactical data in a point-to-multipoint-environment. Additionally it processes and generates SIMPLE/JRE management messages.



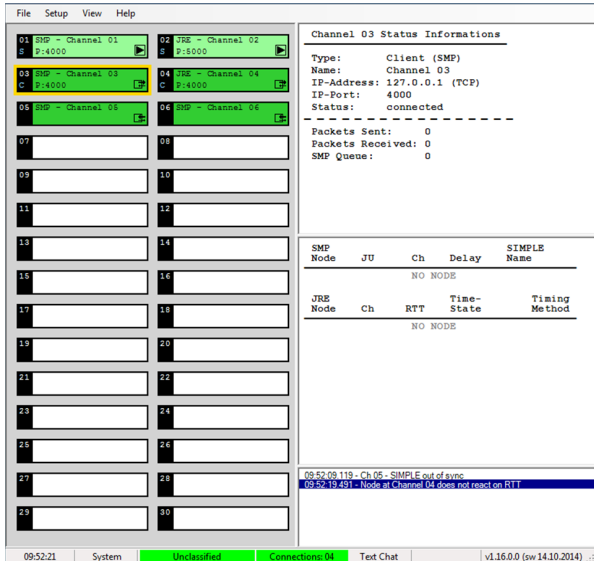
- The Multilink-Controller provides up to 30 connection channels, either incoming or outgoing, TCP or UDP.
- A cascaded architecture using multiple Multilink-Controllers subordinated to each other is possible. This setup provides a more efficient usage of connection lines, because all data from the local nodes will be integrated in one data stream.
- The Multilink-Controller accepts all user packets of STANAG 5602, especially Link 16, Link 11, Link 22. The packet type implementation of the Multilink-Controller is based on Edition 3 of STANAG 5602 and MIL-STD-3011C.

Runs on PCs using Windows 7, 8, 10 (64bit)

Users

- German Air Force
- NATO

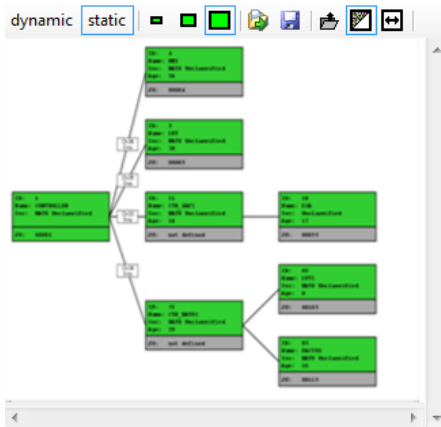
Main Screen



The main screen allows control of the connectivity of the SIMPLE/JRE-network.

It shows:

- Channel state and configuration of up to 30 channels
- SIMPLE and JRE node list
- All error messages are logged here
- Monitor RTT to other nodes
- can be initialised as a Time Reference on SIMPLE

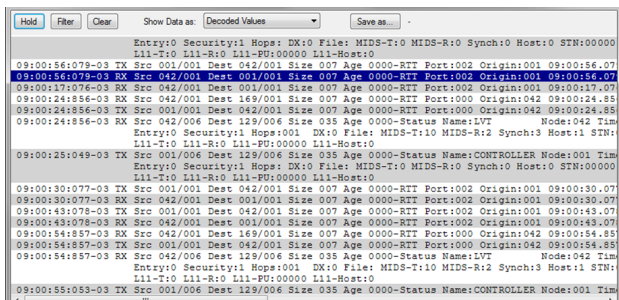


Activity Display

- Activity State of SIMPLE + JRE nodes
- Dynamic build up according to network structure
- The colours of the symbols present further information on the node activity



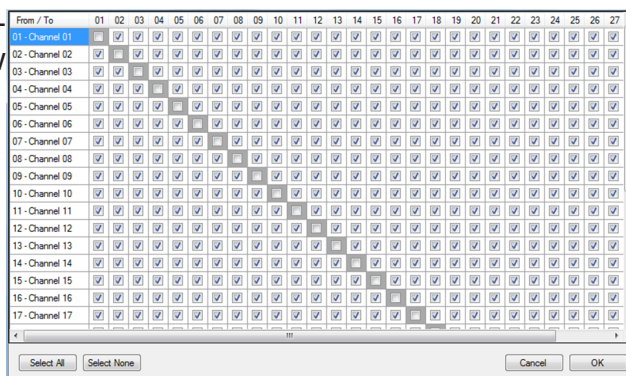
Message Display



- shows decoded SIMPLE/JRE messages
- Filters can be applied
- Multiple instances possible

Routing Matrix

Routing matrix allows channel specific manipulation of the data flow and isolation of specific nodes.



LinkSystems GmbH

Am Pandurenberg 4

84094 Elsendorf

GERMANY

Email: info@linksystems.de

Phone: +49 8753 966544-0

Fax: +49 8753 966544-99

www.linksystems.de

© LinkSystems GmbH, 2020